

Sustainable Schools Rule

“Bin it or swim in
it”

Our School Goal:

- **To teach the students of Beaumaris Primary School where to put their rubbish**
- **Where to put canteen rubbish**

Whole School Plan

- We are going to teach you the right way to throw out your rubbish



A word cloud featuring the word 'plastic' in the center in a large, brown, serif font. Surrounding it are various other words in different colors and sizes, including 'rubbish' in large red letters to the right, 'bags' in red to the left, 'pollution' in brown above 'plastic', 'reuse' in red above 'pollution', 'recycle' in red to the right of 'pollution', 'trees' in blue to the right of 'recycle', 'planet' in blue above 'plastic', 'landfill' in red above 'bags', 'earth' in green below 'landfill', 'destroying' in green below 'bags', 'reduce' in dark purple below 'plastic', and 'recycle' in green below 'plastic'.

Landfill

- Chip packets, Veggie chip packet, popcorn packets, napkins, tissues, fried rice lid,
- SILVER LINING



Blue Bins

- Foil rice containers, lunch bags, frozen yogurt tubs, juice boxes



Soft Plastics

- Glad wrap, sausage roll and pie bags, tomato sauce containers



Over the counter sales

- Canteen grey tub:
Frozen yoghurt tubs and
spoons Icy pole wrappers,
anything wet



- Put any other wrappers in your pocket

Lunch Orders Inside

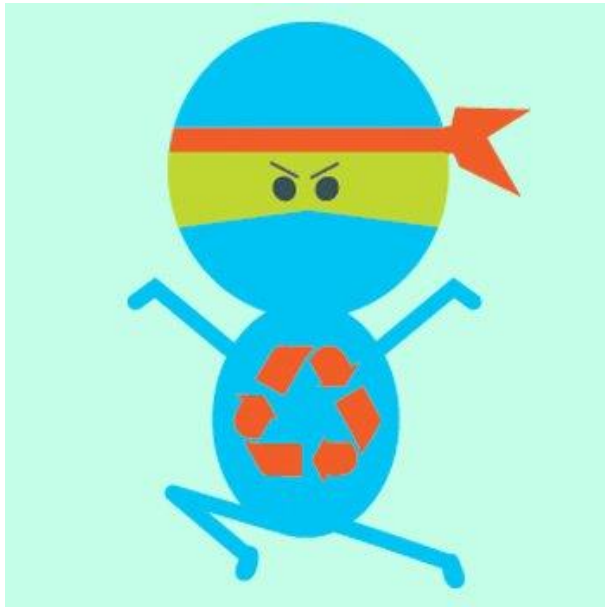
○ All rubbish to be sorted into:

1. Soft Plastics
2. Comingled Recycling
3. Landfill



Lunch Orders Outside

- Class sits together and the rubbish goes back into the class lunch basket.
- Waste Warriors take basket inside and sort into correct bins



Nude Food

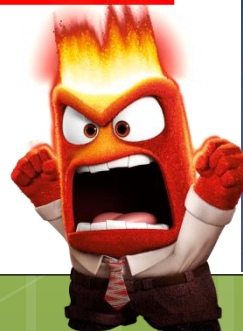
“Get in the mood and bring nude food”



Compost only!

Remember the compost bin under the shade cloth is ONLY for fruit and veggies.

NO RUBBISH
PLEASE!!





Thank you